

HIGH PERFORMANCE POLYCRYSTALLINE MODULE

RSM72-6-320P-340P/5BB

72 CELL POLYCRYSTALLINE MODULE

320-340Wp POWER OUTPUT RANGE

1500VDC MAXIMUM SYSTEM VOLTAGE

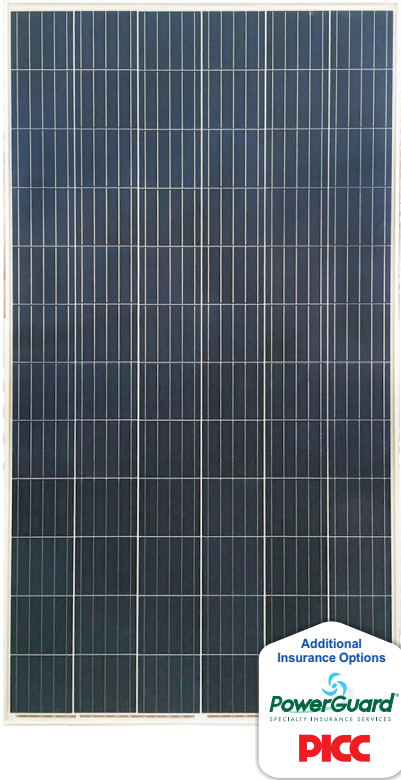
17.5% MAXIMUM EFFICIENCY



About Risen Energy

Risen Energy is a leading, global tier 1 manufacturer of high-performance solar photovoltaic products and provider of total business solutions for residential, commercial and utility-scale power generation. The company, founded in 1986, and publicly listed in 2010, compels value generation for its chosen global customers. Techno-commercial innovation, underpinned by consummate quality and support, encircle Risen Energy's total Solar PV business solutions which are among the most powerful and cost-effective in the industry. With local market presence and strong financial bankability status, we are committed, and able, to building strategic, mutually beneficial collaborations with our partners, as together we capitalise on the rising value of green energy.

KEY SALIENT FEATURES



Global, Tier 1 bankable brand, with independently certified state-of-the-art automated manufacturing



Photon independent field testing - Ranked in the top 2 of 176 international suppliers



Industry leading lowest thermal co-efficient of power



Industry leading 12 years product warranty



Excellent low irradiance performance



Excellent PID resistance



Positive tight power tolerance of 3%



Dual stage 100% EL Inspection warranting defect-free product



Module Imp binning radically reduces string mismatch losses



Warranted reliability and stringent quality assurances well beyond certified requirements



Certified to withstand severe environmental conditions

- ♦ Anti-reflective & anti-soiling surface minimise power loss from dirt and dust
- ♦ Severe salt mist, ammonia & blown sand resistance, for seaside, farm and desert environments
- ♦ Excellent mechanical load 2400Pa & snow load 5400Pa resistance



ISO9001
ISO14001
OHSAS18001



RISEN ENERGY CO., LTD.

Tashan Industry Zone ,Meilin,
Ninghai 315609,Ningbo PRC

Tel: +86-574-59953239

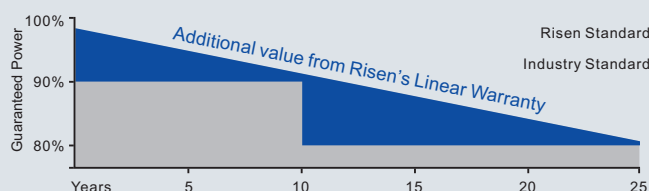
Fax: +86-574-59953599

E-mail: marketing@risenenenergy.com

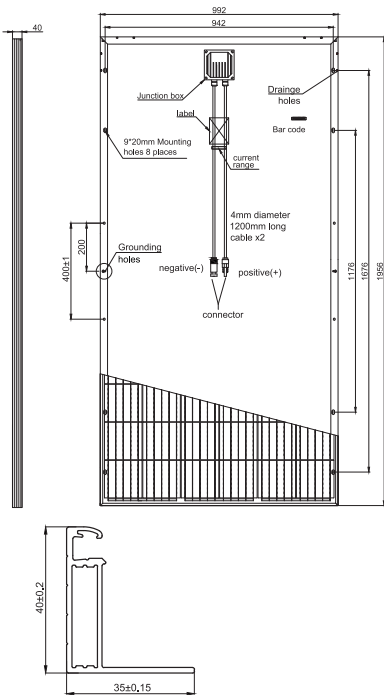
Website: www.risenenergy.com

LINEAR PERFORMANCE WARRANTY

12 year Product Warranty / 25 year Linear Power Warranty



Dimension of PV Modules Unit: mm



ELECTRICAL DATA(STC)

Model Number	RSM72-6-320P	RSM72-6-325P	RSM72-6-330P	RSM72-6-335P	RSM72-6-340P
Rated Power in Watts-Pmax(Wp)	320	325	330	335	340
Open Circuit Voltage-Voc(V)	45.7	46.0	46.3	46.5	46.8
Short Circuit Current-Isc(A)	9.15	9.20	9.25	9.30	9.35
Maximum Power Voltage-Vmpp(V)	37.3	37.7	38.1	38.4	38.6
Maximum Power Current-Impp(A)	8.60	8.65	8.70	8.75	8.80
Module Efficiency (%)	16.5	16.8	17.1	17.3	17.5

STC: Irradiance 1000 W/m², Cell Temperature 25°C, Air Mass AM1.5 according to EN 60904-3.

ELECTRICAL DATA(NOCT)

Model Number	RSM72-6-320P	RSM72-6-325P	RSM72-6-330P	RSM72-6-335P	RSM72-6-340P
Maximum Power-Pmax (Wp)	238.4	242.1	245.9	249.6	253.3
Open Circuit Voltage-Voc (V)	42.5	42.7	43.0	43.3	43.6
Short Circuit Current-Isc (A)	7.40	7.44	7.49	7.53	7.57
Maximum Power Voltage-Vmpp (V)	34.0	34.2	34.5	34.7	34.9
Maximum Power Current-Impp (A)	7.01	7.08	7.13	7.19	7.26

NOCT: Irradiance at 800 W/m², Ambient Temperature 20°C, Wind Speed 1 m/s.

MECHANICAL DATA

Solar cells	Polycrystalline 156.75×156.75 mm
Cell configuration	72 cells (6×12)
Module dimensions	1956×992×40mm
Weight	22kg
Superstrate	3.2 mm, High Transmission, Low Iron, Tempered ARC Glass
Substrate	White Backsheet
Frame	Silver Anodized Aluminium Alloy type 6063T5, Silver Color
J-Box	Potted, IP67, 1500VDC, 3 Schottky bypass diodes
Cables	4.0mm ² (12AWG), 1200mm length
Connector	IP67 MC4 Compatible

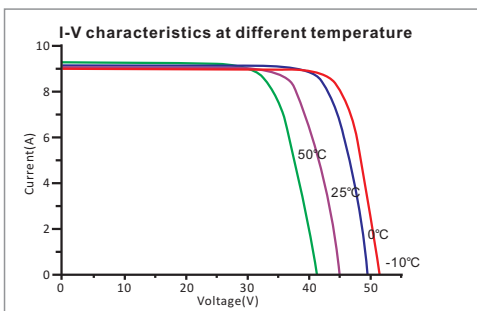
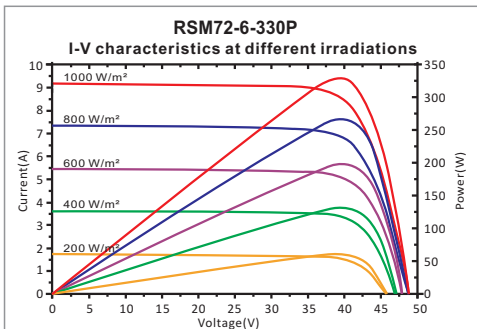
TEMPERATURE & MAXIMUM RATINGS

Nominal Operating Cell Temperature (NOCT)	45°C±2°C
Temperature Coefficient of Voc	-0.32%/°C
Temperature Coefficient of Isc	0.05%/°C
Temperature Coefficient of Pmax	-0.39%/°C
Operational Temperature	-40~+85°C
Maximum System Voltage	1500VDC
Max Series Fuse Rating	15A
Limiting Reverse Current	15A

PACKAGING CONFIGURATION

	40ft	20ft
Number of modules per container	648	270
Number of modules per pallet	27	27
Number of pallets per container	24	10
Packaging box dimensions (LxWxH) in mm	1980×1130×1130	1980×1130×1130
Box gross weight[kg]	640	640

CAUTION: READ SAFETY AND INSTALLATION INSTRUCTIONS BEFORE USING THE PRODUCT.
©2018 Risen Energy. All rights reserved. Specifications included in this datasheet are subject to change without notice.



Our Partners: